



Flexa is a new and innovative housing made from Serinn designed for making standard installation procedures easier, offering an unprecedented operational flexibility. It made of die-cast aluminium with technopolymer components, cable management and meets IP67 degree of protection. Suitable both for traditional analogical and new IP and Megapixel cameras.

- Its functionality obtained through its exclusive and patented SICI opening system makes it possible to choose on which side the housing is opened: right hand side, left hand side, on the back while the upper body can be completely removed. Full easy access to camera and its accessories.
- The body and bracket are made of die-cast aluminum whereas some components are made of technopolymer. The sunshield, made entirely of tecnopolymer, is shaped front and back with different angles in order to be used in both directions also as lightshield (patent pending), e.g.: more inclined side for narrow angle optics. On both sides there is a no-drip flange.
- The IP67 sealing is guaranteed not only by a EPDM perimeter gasket but also by three cable glands located under the housing and covered by a bracket joint. Inner cable connection.
- "All in One" version supplied with an IR-LED illuminator mounted inside a specially designed fitting, integrated onto the housing base (patent pending). This solution is a practical answer to all those problems that might arise when LEDs are placed behind the front glass, together with the camera lens. Illumination range up to 125m (18°).
- An air extraction system for IP/Megapixel camera applications and high temperatures is also available. Two different fan operation modes available to choose from:
 - 1) start/stop controlled by electronic thermostat;
 - 2) continuous operating mode;
 An alarm signal for "fan stop" is available on its dedicated driver.

The housing does not need to be opened when filters are being replaced.

In this way service time is reduced, as camera and its accessories do not need to be removed.

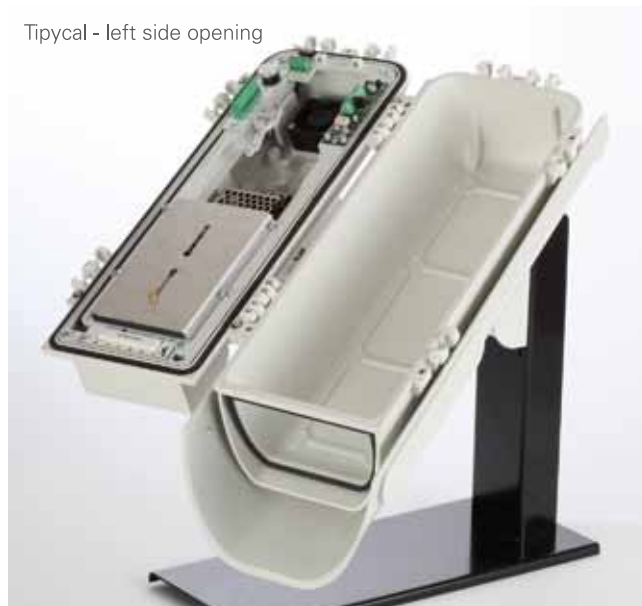
FLEXA - HFA300

Multiple opening aluminium housing with inner cable connection

- Exclusive S.I.C.I. system which allows to choose the opening side
- This product meets all reference standards for Class1 and Class2 applications (without ground reference); patent pending
- Suitable for all traditional analogical and new IP/Megapixel cameras
- Tempered front glass
- Innovative bracket with screws for pipe termination (Ø 20mm) and an openable upper cover which makes it easier to insert connection cables; patent pending
- IP67 protection class with inner cable connection
- Sunshield with different front and back angles that can be used in both directions for a optimal coverage
- "All in One" versions supplied with an integrated IR-LED illuminator and illumination range up to 125m (18°)
- Also available with air extraction system. The housing does not need to be opened when filters are being replaced
- Inner technical spaces suitable for hosting various accessories and systems, e.g.: splitters, power supplies, F.O.tx, etc.

Indoor/Outdoor use

Tipycal - left side opening



MECHANICAL DATA

Raw material Die casting aluminum

Components Technopolymer

Finishing Polyester powder coating, RAL 9002

Cable glands 1x 7÷10mm + 2x 5÷7mm supplied

Inner working sizes (WxH) 80x80 mm

Inner working length (L) Up to 300 mm

Protection class IP67

Protection class with air extraction IP44

Housing weight 2,53 Kg

Bracket weight 0,62 Kg

ELECTRICAL DATA

Heater thermostat Ton 17°C±3°C, Toff 25°C±2°C

Heating system IN 230V, 24V e 12V (6W max.)

PoE heating system IN 12V (3W max.)

Fan thermostat Ton 35°C, Toff 30°C

Fan system IN 12Vdc (100mA, 120mA with driver)

IR-LED illuminator IN 12Vdc (1,2A with driver)

VERSIONS

FLEXA HFA300 will be available with a wide range of options: standard housing, housing with heating system, with filters and air extraction fan, with heating system and forced ventilation, with IR-LED illuminator integrated onto the base, etc.

Please refer to our latest Price List for product codes and ranges of the various models.

ACCESSORIES

PMA Pole mounting kit for WBF bracket

CMB Ceiling mounting kit for WBF bracket

F4020 12Vdc (150mA) fan

HFA/DF Fan-operated driver board

HFA/TP Tamper proof board

HFA/BML Tamper proof locking device

DL2540 Dual-Lock™ M/F velcro tapes 25x40 mm

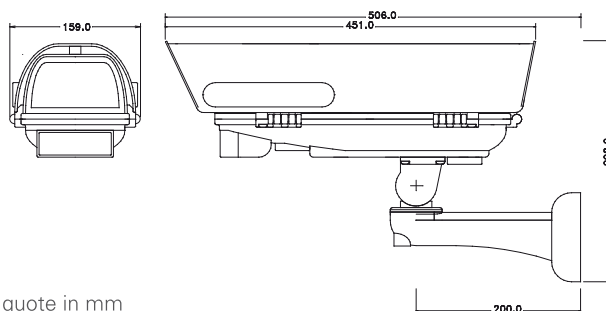
PSRS15-12 Switching power supply 88-264Vac/12Vdc-1.3A

PSRS25-12 Switching power supply 88-264Vac/12Vdc-2.1A

Product sheets and availability subject to change without prior notice. © 2012, SERINN snc. Tutti i diritti riservati.

FLEXA - HFA300

Multiple opening aluminium housing with inner cable connection



Working temperature with heater: -20°C / +60°C
IR range: 48°/45m; 26°/65m; 11°/90m
(up to) 45°/75m; 25°/105m; 18°/125m