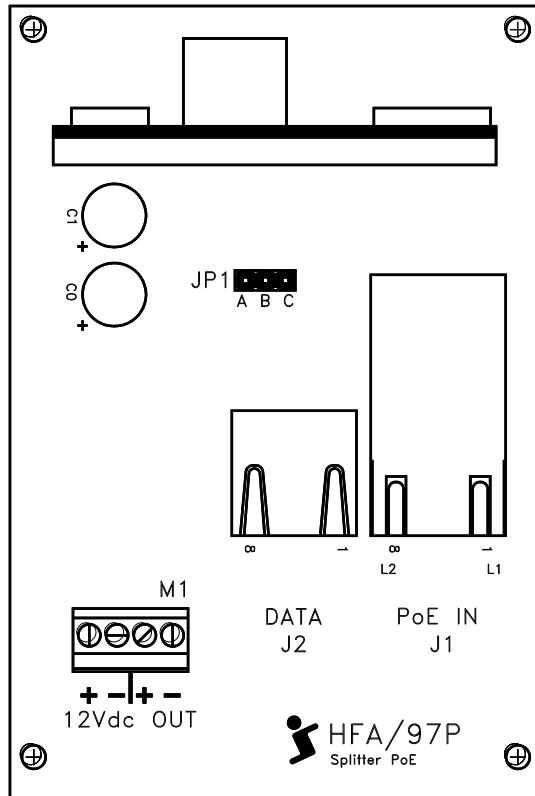


HFA/97P

PoE Splitter Module (for Flexa housing)

IEEE 802.3af compliant

1) Module



- J1** RJ-45 connector for PoE/IN (from PSE, Midspam)
- J2** RJ-45 connector for connecting DATA with the camera (using CAT5e* cable supplied). The camera takes its power from **M1** terminal block.
- M1** Terminal block. Two 12Vdc (typical) output
- JP1** Jumper:
 - **B + C**: it is important that during start-up, the module has a load connected to **M1**. Without load, eg. network-camera, close the jumper to simulate a dummy load. Remember to take it off for normal operation.
 - Open**: 12Vdc (typical) on **M1**
 - **A + B**: 12,65Vdc (typical) on **M1**
- L1** Green LED. It lights up for indicate a presence of PoE connection.


2) Description

The HFA/97P module has been designed to extract power from Power Sourcing Equipment (PSE) over conventional twisted pair Category 5 Ethernet cable, both the network camera as well as other utilities if present inside housing, such as: heating circuit with low absorption (3W), air extraction/ventilation system, etc... for a total of 12W. The module conforms to IEEE 802.3af standard for signature recognition and class programming. There are two power outputs on **M1**. The module is inserted in the provided space below the camera holding slide. Supplied with 20cm CAT5e cable prewired. Compatible with 10/100/1000BASE-T networks.

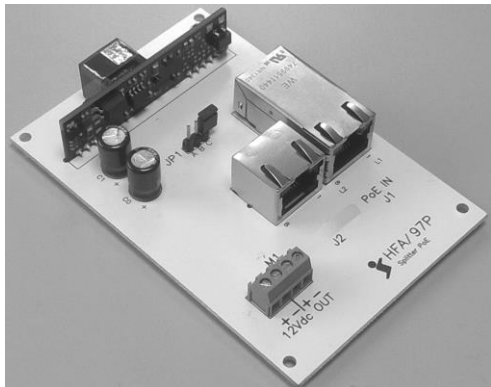
- 1) Classification: Class 0
- 2) **J1** (PoE-Input): 36V ÷ 57V (typical 48V)
- 3) **M1** (Vout typical):** 12Vdc/12,65Vdc (max. 12W with Vin/PoE = 48V at 25°C)
- 4) Operating temperature: -20°C ÷ +70°C
- 5) Over-voltages: protected from over-voltages exceeding max. 80V/1ms

* Ethernet CAT5e connection, colors as IEEE 802-3af method B (T568B Color)
(Pin1 white/orange, orange, white/green, blue, white/blue, green, white/brown, Pin8 brown)

** during start-up (with Vin ≥ 42V) is required a load of 100mA, this is to ensure that the output voltage does not overshoot. If not present external load, eg. network-camera, proceed as specified in chapter 1) Module/**JP1**.

 Do not use the module without a load connected, risk of damage. The power supply module must be supplied exclusively through the PoE cable (Power Over Ethernet).

PoE splitter module, mod. HFA/97P



Fasten the splitter module in the provided space under the slide camera support, using the supplied screws.



Note:

The picture show the internal housing with: thermostating heater circuit, IR-LED driver, PoE + * splitter module, FAN, FAN driver for forced ventilation or for air extraction (for housings with filters). An alarm signal for FAN STOP is available on driver.

* PoE + splitter module is indicated for housing with intergrated IR-LED illuminator.